

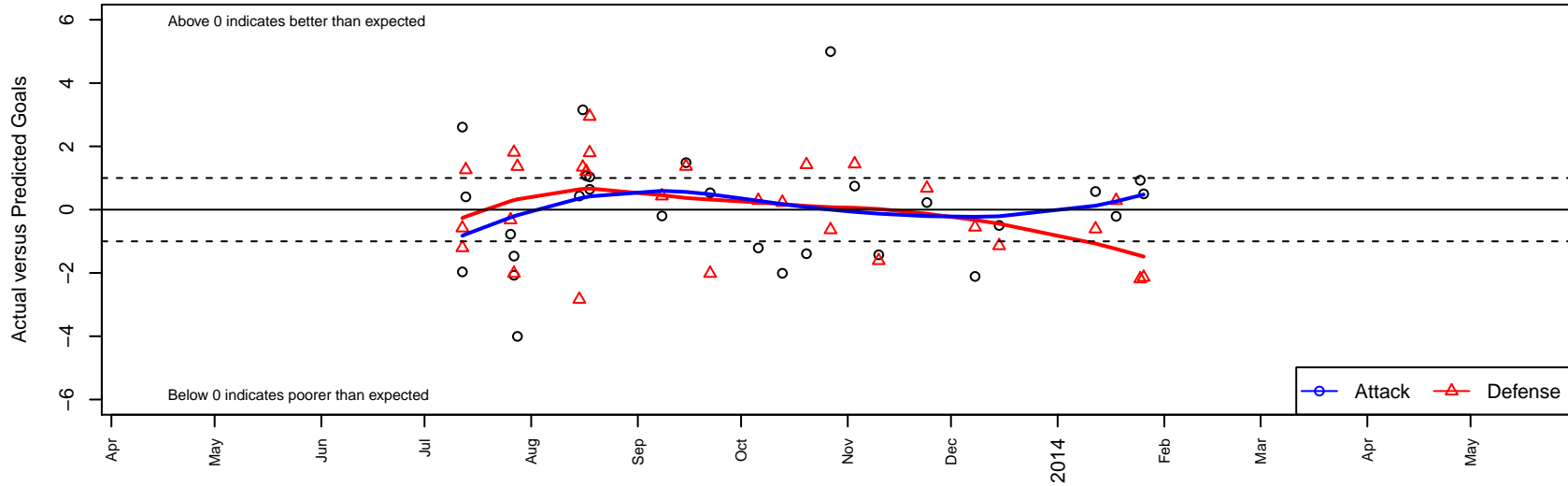
Seattle United S Blue B98

Seattle United Regional
 Seattle, WA
 B98 total strength=1273
 attack=8.44 defense=3.14
 fall league = NPSL B15D2
 alt names used:
 Seattle United S Blue B98
 Seattle United South Blue
 Seattle United South B98 Blue
 Seattle United S Blue [B98]
 SEATTLE UNITED SOUTH 98 BLUE (WA)
 2013 Seattle United South B98 Blue

Venues played:
 Seattle Cup BU15
 Crossfire Select Cup BU15 Silver
 Bigfoot Silver U15
 NPSL B15D2
 Founders Cup B98



Seattle United S Blue B98
 Dots are actual minus expected GF (blue circles) and GA (red triangles).
 Blue line is smoothed change in attack strength. Red is smoothed change in defense strength.



| | date | home | | away | | venue | pred.home | pred.away |
|-------|-------------|----------------------------|---|--------------------------------|---|----------------------------------|------------------|------------------|
| 21883 | 2014-01-26 | Lake Hills Flash B98 | 4 | Seattle United S Blue B98 | 3 | Founders Cup B98 | 1.86 | 2.50 |
| 21788 | 2014-01-25 | Kent United White B98 | 5 | Seattle United S Blue B98 | 3 | Founders Cup B98 | 2.81 | 2.07 |
| 21391 | 2014-01-18 | Seattle United S Blue B98 | 3 | Highline Select B98 | 1 | Founders Cup B98 | 3.21 | 1.29 |
| 21221 | 2014-01-12 | Seattle United S Blue B98 | 3 | TUSK Lightning B98 | 3 | Founders Cup B98 | 2.43 | 2.39 |
| 20809 | 2013-12-15 | Lake Hills Flash B98 | 3 | Seattle United S Blue B98 | 2 | NPSL B15D2 | 1.86 | 2.50 |
| 20675 | 2013-12-08 | Whatcom Rangers White B98 | 1 | Seattle United S Blue B98 | 5 | NPSL B15D2 | 0.45 | 7.11 |
| 19368 | 2013-11-24 | Seattle United S Blue B98 | 5 | Newport FC Raiders B98 | 0 | NPSL B15D2 | 4.77 | 0.68 |
| 18159 | 2013-11-10 | TUSK Lightning B98 | 4 | Seattle United S Blue B98 | 1 | NPSL B15D2 | 2.39 | 2.43 |
| 17337 | 2013-11-03 | Seattle United S Blue B98 | 4 | Seattle United NE Blue B98 | 0 | NPSL B15D2 | 3.25 | 1.44 |
| 16304 | 2013-10-27 | Seattle United W Blue B98 | 2 | Seattle United S Blue B98 | 9 | NPSL B15D2 | 1.36 | 4.00 |
| 15435 | 2013-10-20 | Crossfire Select Mele B98 | 0 | Seattle United S Blue B98 | 0 | NPSL B15D2 | 1.42 | 1.39 |
| 14495 | 2013-10-13 | Seattle United S Blue B98 | 0 | Mercer Island FC Whitecaps B98 | 2 | NPSL B15D2 | 2.01 | 2.23 |
| 13440 | 2013-10-06 | Seattle United S Blue B98 | 2 | Highline Select B98 | 1 | NPSL B15D2 | 3.21 | 1.29 |
| 11535 | 2013-09-22 | Crossfire Select Lewis B98 | 4 | Seattle United S Blue B98 | 3 | NPSL B15D2 | 1.98 | 2.47 |
| 10551 | 2013-09-15 | Seattle United S Blue B98 | 3 | NSC Gunners B98 | 0 | NPSL B15D2 | 1.51 | 1.37 |
| 9590 | 2013-09-08 | Seattle United S Blue B98 | 5 | Kent United Black B98 | 0 | NPSL B15D2 | 5.20 | 0.43 |
| 7549 | 2013-08-18 | Seattle United S Blue B98 | 3 | Cascade FC Green B98 | 0 | Bigfoot Silver U15 | 1.97 | 1.80 |
| 7550 | 2013-08-18 | WPFC Fury Black B98 | 0 | Seattle United S Blue B98 | 2 | Bigfoot Silver U15 | 2.95 | 1.36 |
| 7254 | 2013-08-17 | Seattle United S Blue B98 | 4 | Snohomish United Red B98 | 0 | Bigfoot Silver U15 | 2.93 | 1.20 |
| 6892 | 2013-08-16 | WPFC Fury White B98 | 0 | Seattle United S Blue B98 | 7 | Bigfoot Silver U15 | 1.34 | 3.85 |
| 6700 | 2013-08-15 | ISC Gunners B B98 | 4 | Seattle United S Blue B98 | 3 | Bigfoot Silver U15 | 1.17 | 2.57 |
| 5034 | 2013-07-28 | Seattle United S Blue B98 | 0 | Seattle United W Blue B98 | 0 | Crossfire Select Cup BU15 Silver | 4.00 | 1.36 |
| 4784 | 2013-07-27 | Crossfire Select Lewis B98 | 4 | Seattle United S Blue B98 | 1 | Crossfire Select Cup BU15 Silver | 1.98 | 2.47 |
| 4790 | 2013-07-27 | Kent United White B98 | 1 | Seattle United S Blue B98 | 0 | Crossfire Select Cup BU15 Silver | 2.81 | 2.07 |
| 4568 | 2013-07-26 | Seattle United S Blue B98 | 4 | Newport FC Raiders B98 | 1 | Crossfire Select Cup BU15 Silver | 4.77 | 0.68 |
| 3044 | 2013-07-13 | Whatcom Rangers B98 | 1 | Seattle United S Blue B98 | 2 | Seattle Cup BU15 | 2.26 | 1.59 |
| 2817 | 2013-07-12 | Crossfire Select Mele B98 | 2 | Seattle United S Blue B98 | 4 | Seattle Cup BU15 | 1.42 | 1.39 |
| 2824 | 2013-07-12 | Seattle United S Blue B98 | 0 | Cascade FC Green B98 | 3 | Seattle Cup BU15 | 1.97 | 1.80 |